

Human Trafficking Practice Guidelines

DRAFT

By

Jacqueline A. Harris, M.D.
DCF Regional Medical Director

October 2012

Table of Contents

Foreword by DCF Commissioner Joette Katz

1. Health Care Assessments Introduction
2. Medical Assessments
 - Medical Assessment Protocol
3. Mental Health Assessments
 - Mental Health Assessment Protocol
 - Supportive Services
4. Dental Assessments
 - Dental Assessment Protocol
5. Emergency Room Assessments

 - Emergency Room Procedures
 - Emergency Room Protocol
6. Human Trafficking Liaisons
 - Human Trafficking Liaison Duties
 - Human Trafficking Monitoring Tool
7. Flow Charts
 - Human Trafficking Framework
 - Health Care Assessments:
 - Medical
 - Mental Health
 - Support Services
 - Dental

Health Care Assessments Introduction

Every person who is suspected of having been trafficked deserves the opportunity to have a thorough medical and dental assessment. This Practice Guideline for Human Trafficking outlines the areas of physical, sexual, substance use, mental health and dental care that are to be assessed using the protocols included in this practice guideline. The identified needs, be they acute or require on-going services are incorporated into the case plan for youth who remain involved in DCF. Acute assessments will be done in an emergency room utilizing the Emergency Room Assessment Protocol. The non-urgent assessments can be completed by utilizing available community services including Enhanced Care Clinics, DCF Intermediate Evaluations, Primary Care Physicians, trauma-informed therapists/providers and community dentists. Sustained efforts need to be made to engage the youth in the process of assessments. If a particular evaluation is refused, a plan needs to be developed with the youth to have the assessment done at a later date. Monitoring of the completion of assessments is the role of the Human Trafficking Liaison (HT Liaison) however the DCF worker is responsible for setting appointments for the initial assessments and indicated follow-up care. Law enforcement needs may supersede these protocols at times. In those instances the modifications in assessment needs and/or timing is to be coordinated by the HT Liaison.

Medical Assessment

The Medical Assessment Protocol is composed of three components: physical, sexual and substance use. In addition to routine medical assessments in these three areas, providers are asked to check for medical issues that are more prevalent in people who have been trafficked. A copy of the protocol should be given to each provider as a guideline.

Deviation from the protocol should be accompanied by a clinical justification from the provider along with a recommendation as to whether the test/exam needs to be rescheduled for a later date. Male and female trafficked victims need to have the sexual assessment completed.

All available medical records are to be made available to the providers upon consent of the guardian.

Health Care Assessment Protocol

DRAFT

Medical Assessment Protocol

Physical

- Routine physical assessment, vital signs
- Assess for signs of physical abuse
- Assess for signs of medical neglect, nutritional status
- Check for tattoos and other 'markings'
- Indicated lab work
- Determine current medications
- Provide prescriptions for needed medications

Sexual

- Pregnancy test - when appropriate
 - STD testing
 - Assess for signs of sexual abuse
 - Assess for birth control needs
 - Provide prescriptions for needed medications
-

Substance Use

- Query about substance use history
- Assess for signs of drug use, ex. snorting, injections
- Test for recent substance use
- Assess for withdrawal symptoms

Mental Health Assessment

General mental health and trauma screening assessments need to be completed on all youth suspected of being trafficked. An initial screening may have taken place in an emergency room however a thorough assessment should be completed following placement. When a youth has an existing therapist and/or medication provider, the current treaters should be utilized for the assessments whenever possible. These assessments should be at least scheduled within two weeks if identification as a potential trafficking victim. Enhanced Care Clinics and DCF Intermediate Evaluations can be utilized when appropriate. When ongoing services are indicated DCF procedures are used to obtain needed services. Each therapist/provider should be made aware of the reporting and collaboration requirements that that DCF has. A copy of the Mental Health Assessment Protocol can be given to the initial assessors and ongoing therapists for their reference. The DCF worker is responsible to work with the providers to identify any supportive service needs that the youth and family/guardian have. The HT Liaison can serve as a resource for the DCF worker when finalizing services. All available mental health records are to be made available to the providers upon consent of the guardian.

Health Care Assessment Protocol

DRAFT

Mental Health Assessment Protocol

Initial Screenings and Assessments

General Mental Health and Trauma Screening

- Initial trauma assessments; or update prior assessments
- General mental and behavioral health assessments
- Identify human trafficking related safety issues
- Determine current medications, availability and provider

Outcomes

- Level of care recommendation for on-going services
- Develop an initial Safety Plan that addresses at a minimum: AWOL risk; response to trafficker if occurs: in person, telephone, internet; addressing reported fears and concerns
- Referrals for appropriate services: therapy, evaluations, support services
DCFIE and ECCs can be utilized.
- Arrange for ongoing medication assessments as indicated

Ongoing Services

Mental Health Therapist

- Assessment issues: trauma symptoms and sequelae, Stockholm Syndrome, spiritual status, sleep disturbance, dissociative reactions, suicidal and homicidal ideations, self-injurious behaviors
- Refer for indicated psychological and medication assessments as needed
- Report new trafficking incidents to Careline when revealed in treatment
- Ongoing evaluation of the level of care needs
- Safety Plan development and revisions as needed
- Collaborate with DCF as needed to meet identified needs
- Provide written documentation to DCF when required
- Utilize trauma-informed approach to treatment

Medication Provider

- Collaborate with therapist and DCF to provide medications for targeted symptoms
- Utilize a trauma-informed approach to treatment

Support Services

The following categories are areas to be explored with suspected trafficking victims and their network of family and supports. Utilization of services by a youth should be done in collaboration with the therapists/providers. This list is a framework for considering support services and is not intended to be all inclusive.

Community Services

- Connect with Sexual Crisis Center
- Advocacy
- Mentoring
- Alternative Treatments

Safety Planning

- 800 Numbers both national and local for trafficking victims and runaways
- Information on available services and their rights as trafficking victims
- Information on the effects that trauma can have on a person
- Address safety issues that the youth faces when they go AWOL

Personal Development

- Life Coach
- Job training
- Advocacy training
- Educational consultation

Family and Significant Others

- Support programs identified for family and supporters
- Information on available services and their rights as family and supporters
- Information on the effects that trauma has on a family and support networks

Dental Assessment

Standard DCF procedures are used to obtain acute and routine dental care for these youth.

If an emergency room evaluation was done, acute dental needs should have been identified prior to placement in order to expedite a referral for treatment.

Health Care Assessment Protocol

DRAFT

Dental Assessment Protocol

Acute Dental

- Assess for evidence of acute dental issues
- Obtain needed services

Routine Dental

- Schedule for dental care per DCF guidelines
-

Emergency Room Assessment

Standard DCF field assessments are used to determine if a youth needs to be brought to an emergency room for medical, mental health and/or dental clearance before being placed. When an emergency room assessment is indicated, it may be possible to complete a substantial part of the initial healthcare assessments. The DCF worker should request that the Human Trafficking Emergency Room Protocol be followed by the treating emergency department. All emergency departments in the state have been provided a copy of the ER protocol. When medically cleared for placement, the DCF worker should obtain results of lab tests, prescription for current medications and documentation of any needed follow-up.

Health Care Assessment Emergency Room Protocol

DRAFT

Procedures

These procedures are to provide the medical and psychiatric assessments that DCF needs to appropriately place and care for the identified child/youth. Due to forensic investigations, at times these procedures may have to yield to the needs of law enforcement.

1. When possible, a child/youth that has been identified by the emergency room staff or brought to the emergency room because of suspicion of having been trafficked should be interviewed alone.
2. When an emergency room staff member identifies a potential human trafficking victim, **DCF Careline** is to be notified immediately at **800 842-2288**. A DCF worker will be assigned and deployed to the emergency room for DCF case management.
3. Child/youth is to have all of the assessments identified in the 'E.R. Response to Suspected Human Trafficking Victim Assessment Protocol' offered to him/her unless clinical justification is provided. Refusal of any part or the entire exam by the child/youth should be documented in the medical record and the DCF worker informed.
4. The sexual assessment can be conducted by the emergency room staff or by an outside agency used by the hospital to conduct sexual assault examinations and interviews.
5. Mental health assessment can be done by the emergency room staff, EMPS [Emergency Mobile Psychiatric Service] and/or by an outside agency used by the hospital.
6. Substance abuse screening tests are for the use of DCF only.
7. Full prescriptions should be provided upon discharge for current medications and any new medication ordered, as they will be needed for placement.
8. Upon completion of the medical, psychiatric and dental assessments, clearance for placement is to be provided to the DCF worker along with the results of lab tests, prescriptions for current medications and documentation of any needed follow-up services.

Health Care Assessment Emergency Room Protocol

DRAFT

Physical

- Routine physical assessment, vital signs
- Assess for signs of physical abuse
- Assess for signs of medical neglect, nutritional status
- Check for tattoos and other 'markings'
- Indicated lab work
- Determine current medications
- Provide prescriptions for needed medications

Sexual

- Pregnancy test
- STD testing
- Assess for signs of sexual abuse
- Provide prescriptions for needed medications

Substance Use

- Query about substance use history
- Assess for signs of drug use, ex. snorting, injections
- Test for recent substance use

Mental Health

- Assess for suicidal and homicidal ideations
- Assess need for urgent psychiatric hospitalization
- Complete a Mental Status Exam
- Determine current medications
- Provide prescriptions for needed medications
- Determine level of care needed for immediate placement based on mental health needs and safety concerns

Acute Dental

- Assess for evidence of acute dental issues

Human Trafficking Liaisons

Each Regional Director has appointed a Human Trafficking Liaison (HT Liaison) to serve on the DCF HART team that is responsible for the oversight of human trafficking within the department. The duties of the HT Liaison as described in this document, address the areas of communication requirements, ongoing service needs for each youth, education and training of DCF employees and community agencies, and data collection and reporting. Each HT Liaison has responsibility within their region to monitor work flow and provide guidance to the DCF workers who are working with youth suspected of being trafficked. Monitoring of the cases will be done for the first ninety days (90) after a youth is first identified. The Human Trafficking Monitoring Tool which is included in this practice guideline is to be updated throughout the 90 days to track the mandatory forensic, mental health, medical and general DCF issues that need to be addressed for each youth. At the conclusion of the 90 days, or when the case is closed if occurs sooner, the form is signed by the DCF Social Work Supervisor and the HT Liaison before being placed in the record.

Human Trafficking Liaison Duties

DRAFT

Communications

1. Notify Regional Director, Area Office Principle Attorney, ARG SW, ARG RN and Clinical Director when a suspected trafficked youth has been identified.
2. Ensure information is being shared as indicated between DCF, youth, family/guardians, law enforcement, providers, HART and other involved parties.
3. Contact the HART leaders to determine if the FBI should be notified of a suspected trafficked youth.
4. After 90 days, the HT Liaison insures that the SWS is aware of the outstanding issues that will require continued monitoring. The Human Trafficking Monitoring Tool is placed into the DCF record and a copy given to the SWS.

Ongoing Service Needs

1. Monitor DCF-involved youth for first 90 days [or until case is closed if that is sooner] after case is accepted as a suspected human trafficking situation in order to ensure that services indicated in the Human Trafficking Framework under Forensics, Mental Health, Medical/Dental and DCF Issues have been addressed and included in the DCF Case Plan.
2. The HT Liaison works with the SW, SWS and ARG to complete the indicated assessments and arrange for services.
3. Participate in teaming reviews held in the Area Offices to ensure that the DCF Case Plan includes the indicated on-going services.
4. Maintains a list of qualified providers for mental health and medical services.
5. HT Liaison ensures that the guardian has received information about support services from the worker.

Education/Training

1. Establish relationships with community agencies that can provide assistance, ex. sexual assault crisis hotlines, support groups for victims and families.
2. Serve as a conduit for information needs of the region with Central Office and the community.
3. Provide or arrange for one training a human trafficking related subject each year to the Region.

Data Reporting and Quality Improvement

1. Update regional written response protocols and forms as needed.
2. Provide Central Office with recommendations from the Region on how to improve the human trafficking system.
3. Provide required data from the region to Central Office

Human Trafficking Monitoring Tool

Name: _____

LINK #: _____

DRAFT

Forensics

Legal Status of Youth	Yes _____	No _____	NA _____	Date: _____
DCF Legal Consult obtained	Yes _____	No _____	NA _____	Date: _____
FBI Notified	Yes _____	No _____	NA _____	Date: _____
State/Local Police Notified	Yes _____	No _____	NA _____	Date: _____
MDT Evaluation required by law enforcement	Yes _____	No _____	NA _____	Date: _____
SAN Evaluation required by law enforcement	Yes _____	No _____	NA _____	Date: _____
DCF Investigation completed	Yes _____	No _____	NA _____	Date: _____
Immigration Status determined	Yes _____	No _____	NA _____	Date: _____
Trial Status determined	Yes _____	No _____	NA _____	Date: _____

Mental Health

Emergency Room MSE assessment completed	Yes _____	No _____	NA _____	Date: _____
If no ER assessment then who did the MSE	Yes _____	No _____	NA _____	Date: _____
Trauma assessment completed	Yes _____	No _____	NA _____	Date: _____
General mental health assessment completed	Yes _____	No _____	NA _____	Date: _____
Domestic Violence screening completed	Yes _____	No _____	NA _____	Date: _____
Medication evaluation indicated	Yes _____	No _____	NA _____	Date: _____
Psychological testing indicated	Yes _____	No _____	NA _____	Date: _____
Mental Health/Trauma therapy indicated	Yes _____	No _____	NA _____	Date: _____
Therapy accepted	Yes _____	No _____	NA _____	Date: _____
Support Services offered	Yes _____	No _____	NA _____	Date: _____
Treatment plan submitted by therapist	Yes _____	No _____	NA _____	Date: _____

Name: _____

LINK #: _____

DRAFT

Medical/Dental

Physical assessment completed	Yes _____	No _____	NA _____	Date: _____
General Medical	Yes _____	No _____	NA _____	Date: _____
Sexual	Yes _____	No _____	NA _____	Date: _____
Substance use	Yes _____	No _____	NA _____	Date: _____
Acute Dental	Yes _____	No _____	NA _____	Date: _____
Medications	Yes _____	No _____	NA _____	Date: _____
Emergency room assessment done	Yes _____	No _____	NA _____	Date: _____
Follow-up medical needs identified	Yes _____	No _____	NA _____	Date: _____
Medical care needs have all been addressed	Yes _____	No _____	NA _____	Date: _____
Substance abuse screening completed	Yes _____	No _____	NA _____	Date: _____
Substance use needs have all been addressed	Yes _____	No _____	NA _____	Date: _____
Follow-up dental needs identified	Yes _____	No _____	NA _____	Date: _____
Dental care needs have all been addressed	Yes _____	No _____	NA _____	Date: _____

DCF Issues

ARG consulted	Yes _____	No _____	NA _____	Date: _____
Initial placement time limited	Yes _____	No _____	NA _____	Date: _____
If yes LOC determination made for on-going needs and paperwork done	Yes _____	No _____	NA _____	Date: _____
Education needs identified	Yes _____	No _____	NA _____	Date: _____
If yes, was provided	Yes _____	No _____	NA _____	Date: _____
Insurance coverage in place	Yes _____	No _____	NA _____	Date: _____
Caregiver/provider training needed	Yes _____	No _____	NA _____	Date: _____
If yes, was provided	Yes _____	No _____	NA _____	Date: _____
DCF Care Plan includes HT needs	Yes _____	No _____	NA _____	Date: _____

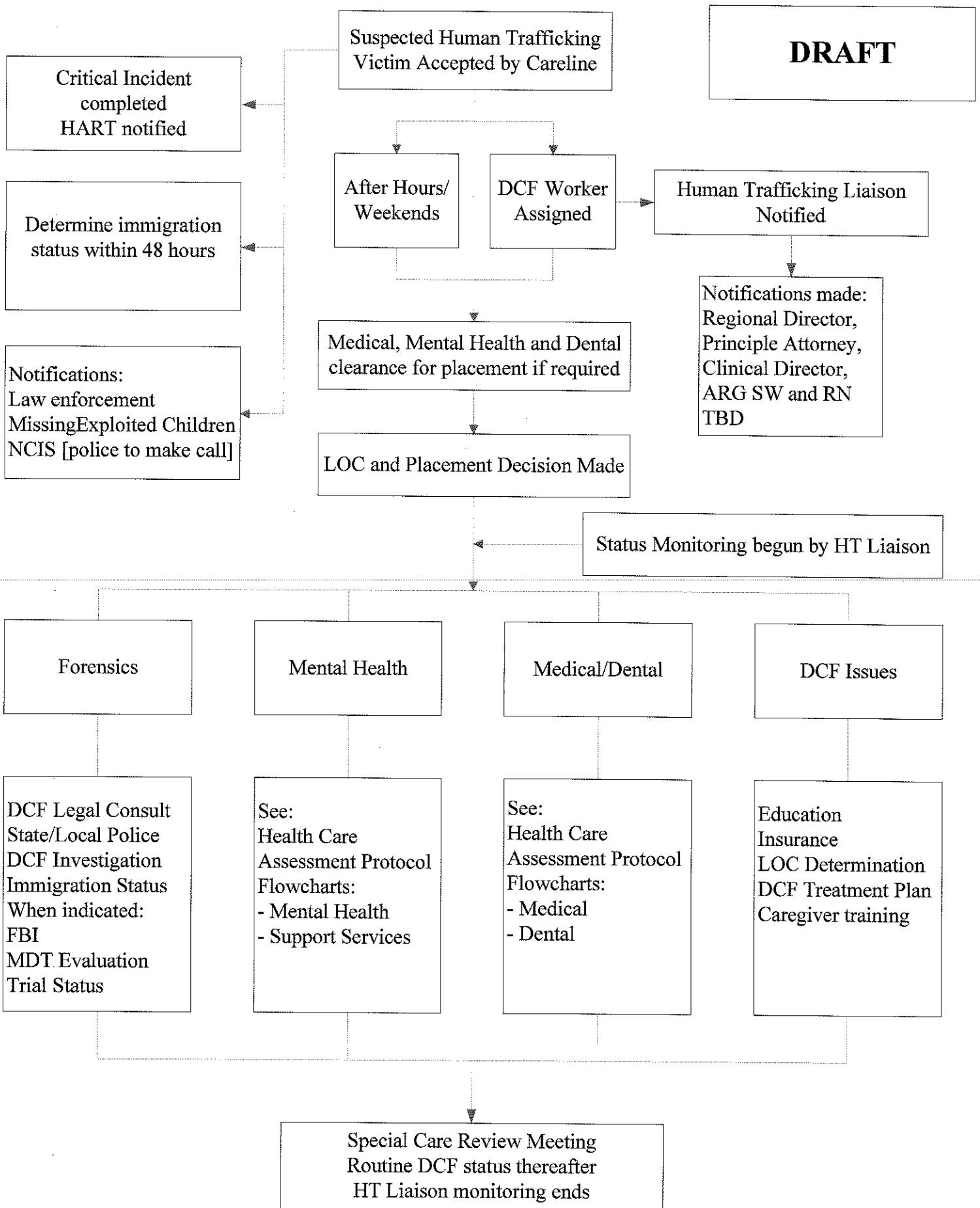
Regional Liaison: _____

Date Opened: _____

DCF SWS: _____

Date Monitoring Closed: _____

Human Trafficking Framework Flowchart



Health Care Assessments

DRAFT

Medical

Placement

Medical Assessment

Physical

- Routine physical assessment
- Vital signs
- Assess for signs of medical neglect
- Assess nutritional status
- Check for tattoos and other 'markings'
- Indicated lab work
- Determine current medications
- Provide required prescriptions

Sexual

- Pregnancy test
- STD testing
- Assess for signs of sexual abuse
- Assess for birth control needs
- Provide required prescriptions

Substance Use

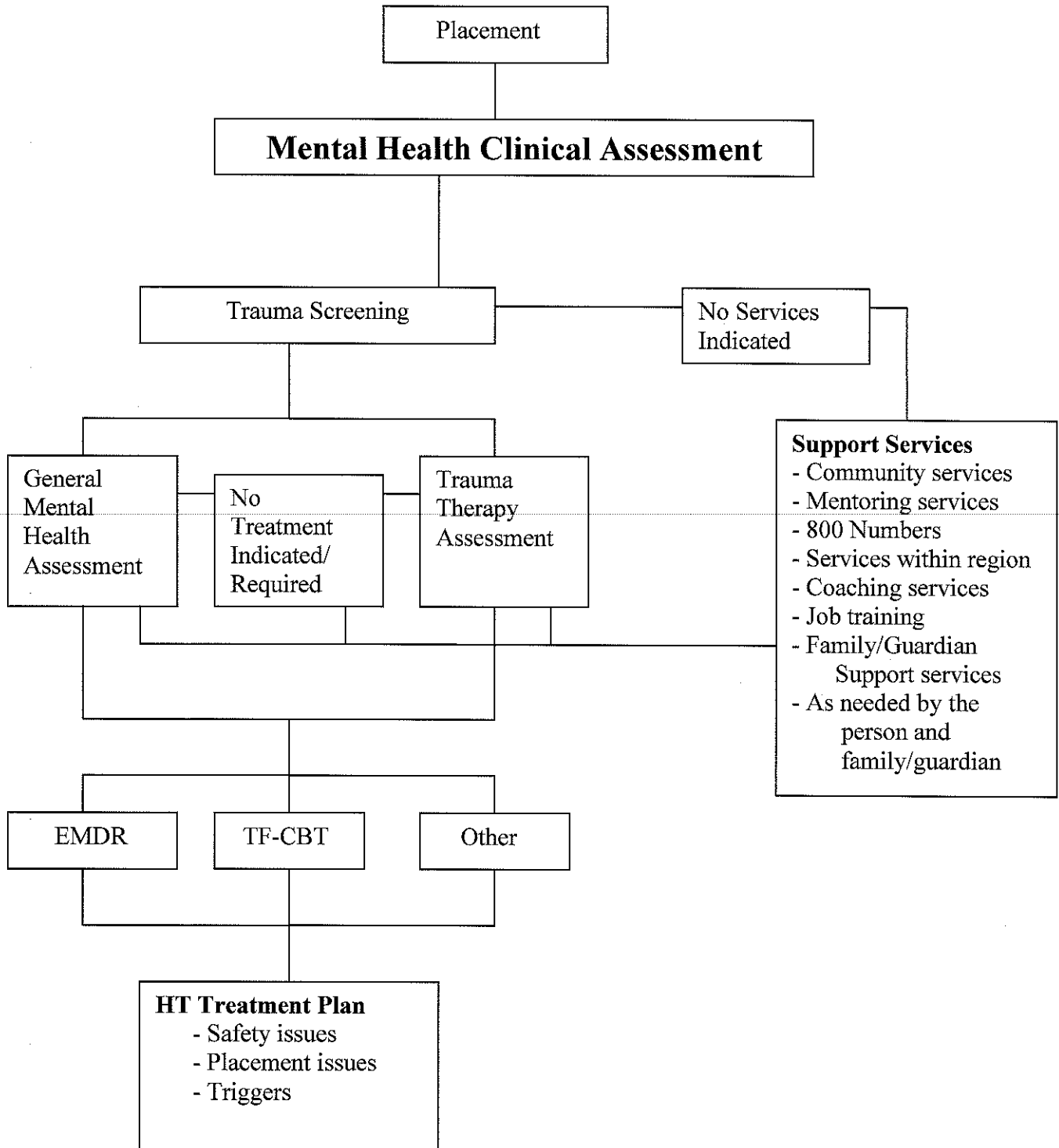
- Obtain substance use history
- Assess for signs of drug use
ex. snorting, injections
- Test for recent substance use
- Assess for withdrawal signs

Follow-up as indicated

Health Care Assessment

DRAFT

Mental Health



Health Care Assessment

DRAFT

Support Services

Community Services

Connect with
Sexual Crisis
Center

Advocacy

Mentoring

Alternative
Treatments

Safety Planning

800 Numbers
National and
Local

Flyers on
Available
Services/Rights

Information on
effects of trauma
on a person

AWOL
Preparation

Personal Development

Coaching

Job Training

Advocacy
Training

Family and Significant Others

Support
Programs

Flyers on
Available
Services/Rights

Information on
effects of trauma
on a family

Health Care Assessment

DRAFT

Dental Assessment

Placement

Dental Assessment

Urgent Care

Routine Care

Follow-up as indicated

