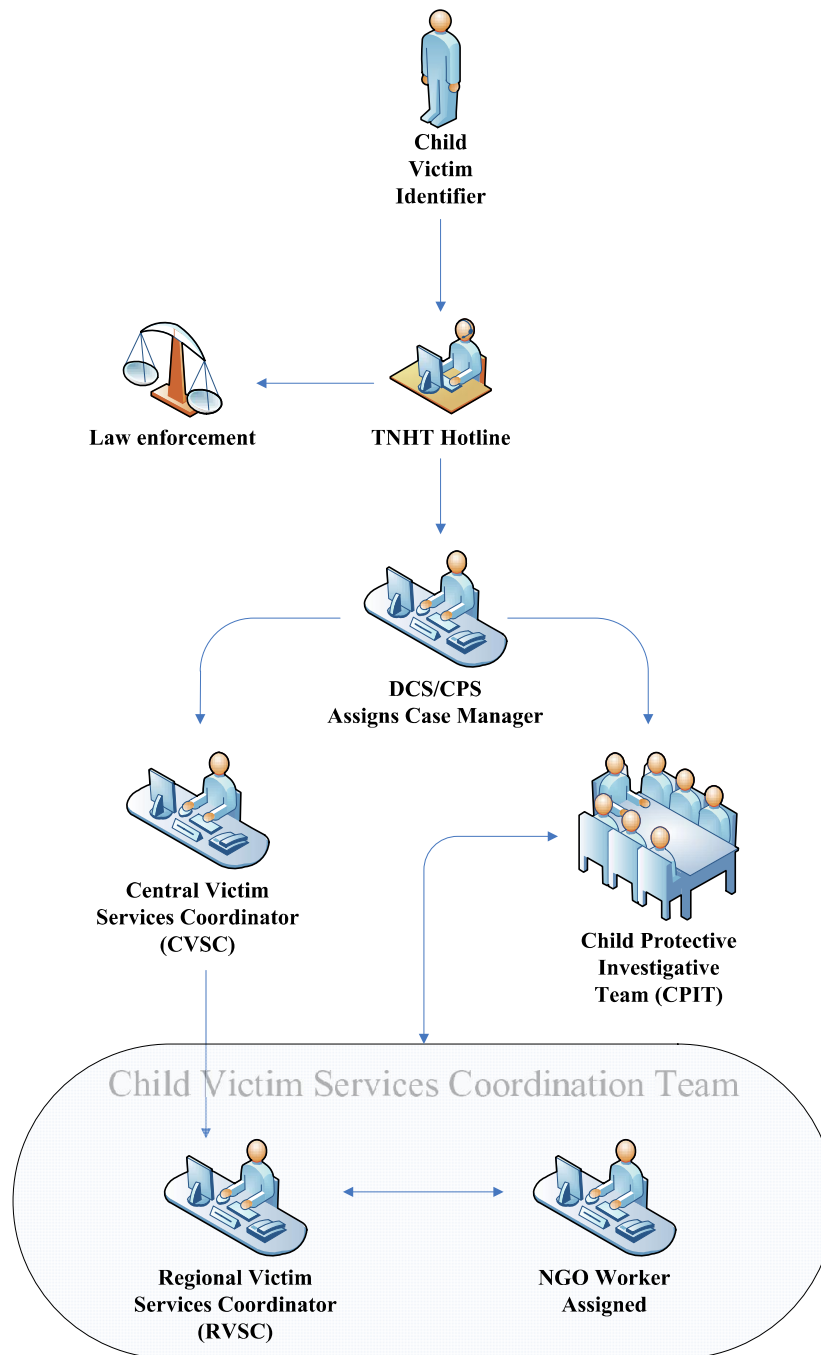


**Figure 1 - Reporting Child Sex Trafficking Victims**

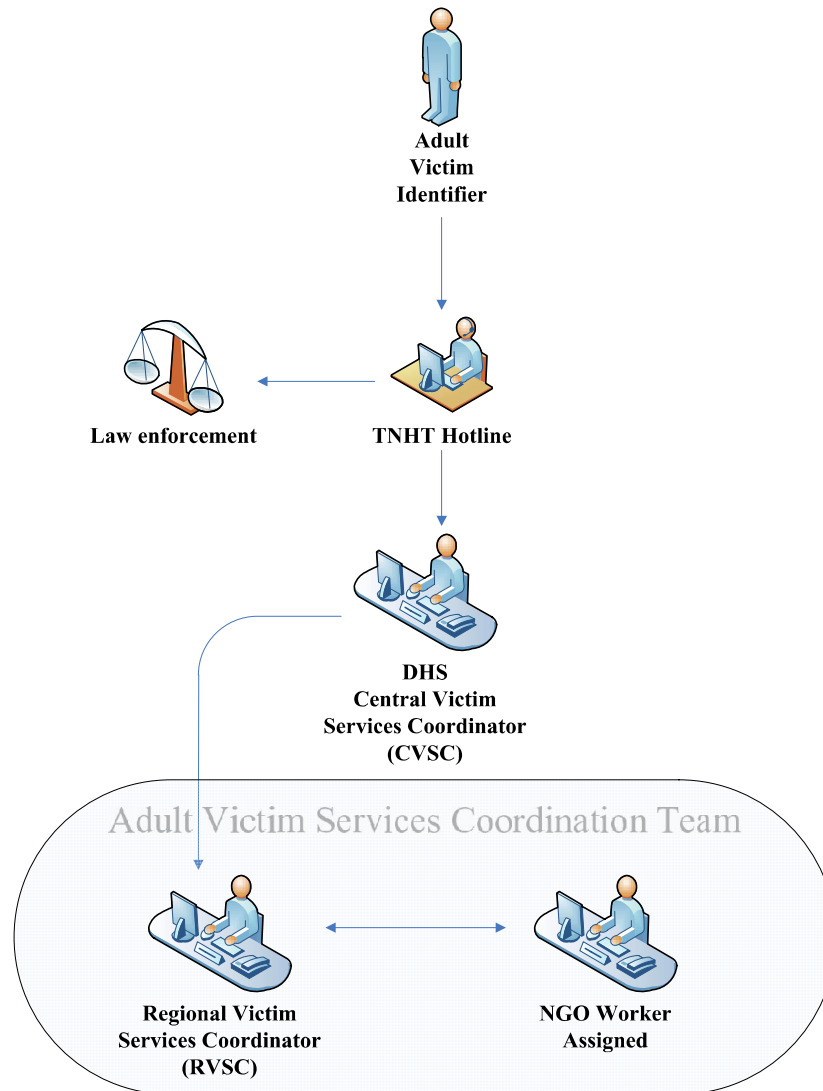


**Notes:**

The arrow represents information flowing from one source to another.

The double arrow represents the continuous exchange of information between two groups and/or professionals.

**Figure 2 - Reporting Adult Sex Trafficking Victims**



**Notes:**

The arrow represents information flowing from one source to another.

The double arrow represents the continuous exchange of information between two groups and/or professionals.

Table 3

***Victim Characteristics in Cases Confirmed to be Human Trafficking by Type of Trafficking***

Victim Characteristic	Total	Sex Trafficking	Labor Trafficking
Victim's County			
Sex			
• Male			
• Female			
Age			
• 9 or younger			
• 10-12			
• 13-15			
• 16-17			
• 18-24			
• 25-34			
• 35 or older			
• Unknown			
Race			
• White			
• Black/African American			
• Hispanic/Latino origin			
• Asian			
• Other			
• Unknown			
Citizenship			
• U.S. Citizen/U.S. National			
• Permanent U.S. resident			
• Undocumented immigrant			
• Qualified immigrant			
• Temporary worker			
• T visa			
• U visa			
• Unknown			
Country/State of origin: (data field)			
Primary Language: (data field)			
Number of victims identified			

Table 5

***Human Trafficking Incidents Opened for at Least 12 Months by Outcome***

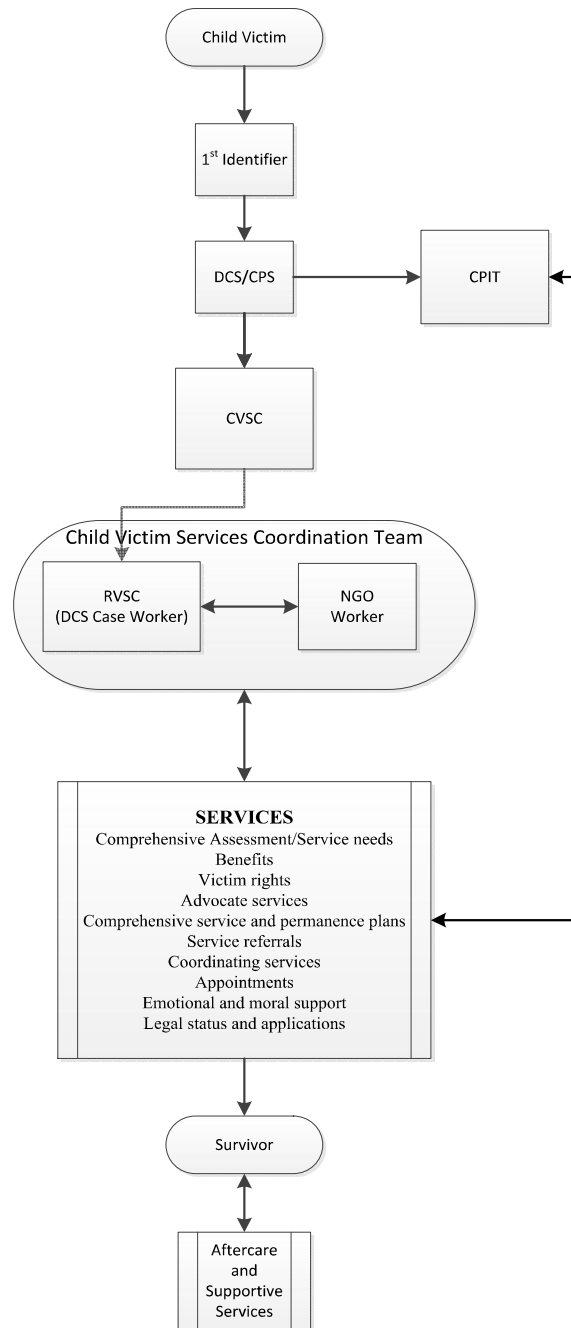
Outcome	Total		Sex Trafficking		Labor Trafficking	
	Number	Percent	Number	Percent	Number	Percent
All human trafficking cases						
Confirmed						
Not confirmed						
Pending or unknown confirmation status						

Table 6

***Human Trafficking Incidents Opened for at Least 12 Months by Outcome***

Incident Type	Confirmed Trafficking	Non- Confirmed Trafficking	Pending Outcome
• Total			
Sex trafficking			
• Adult prostitution			
• Prostitution or sexual exploitation of a child			
• Sexualized labor			
• Other			
Labor trafficking			
• Commercial industry labor			
• Unregulated industry labor			
• Other/Unknown			

**Figure 4 – Standardized Coordinated System of Service and Information Delivery to Child Sex Trafficking Victims**

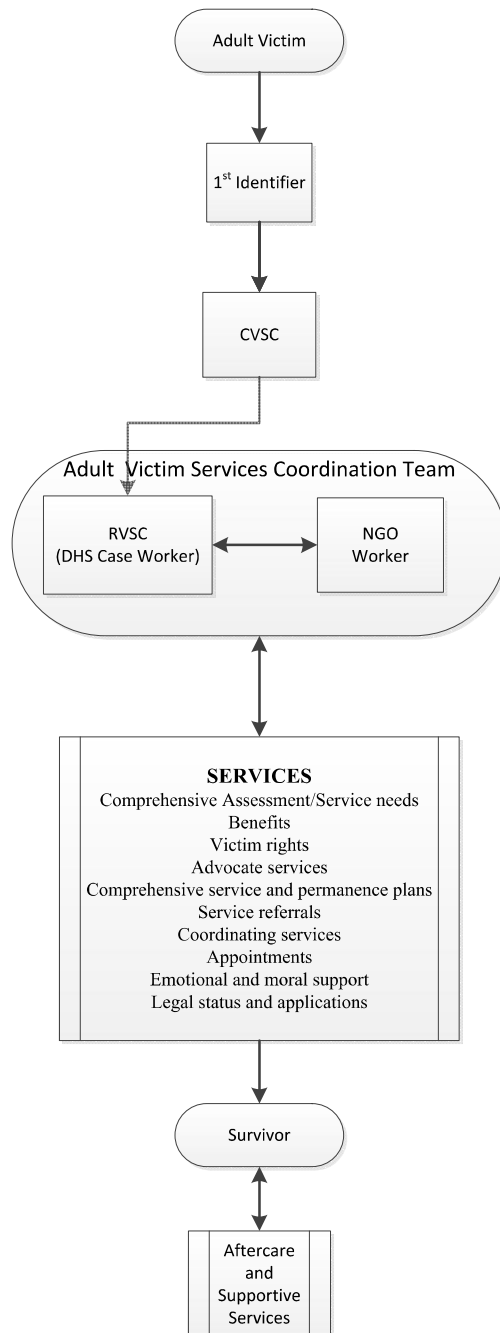


**Notes:**

The arrow represents the flowing of information from one source to another.

The double arrow represents the continuous exchange of information between two groups and/or professionals.

**Figure 5 – Model for Coordinated Service and Information System Delivery for Adult Sex Trafficking Victims**



**Notes:**

The arrow represents information flowing from one source to another.

The double arrow represents the continuous exchange of information between two groups and/or professionals.